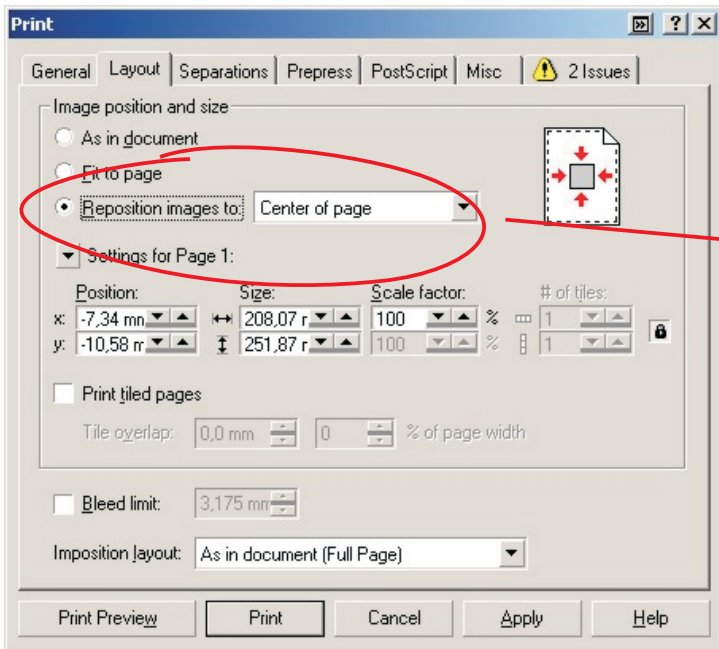
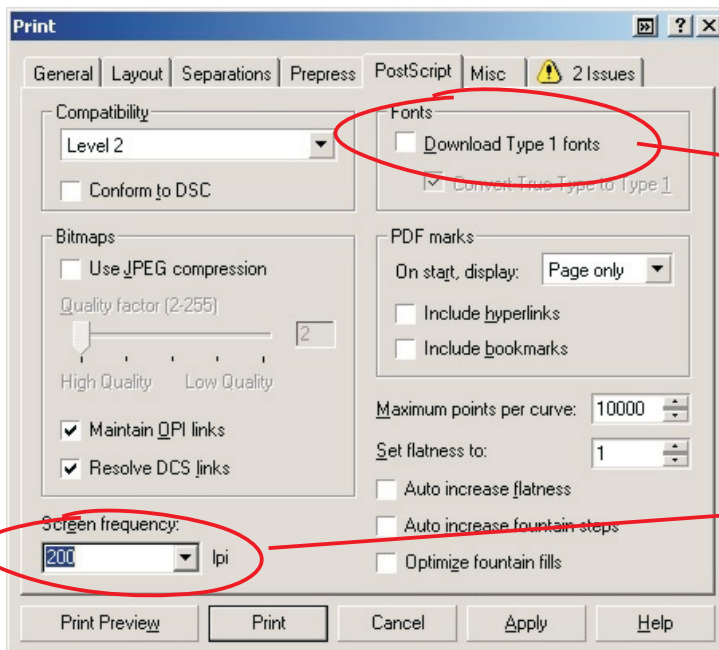


select the printer OKI C9500(PS)

Turn on the "Print to file" option by clicking on the small box

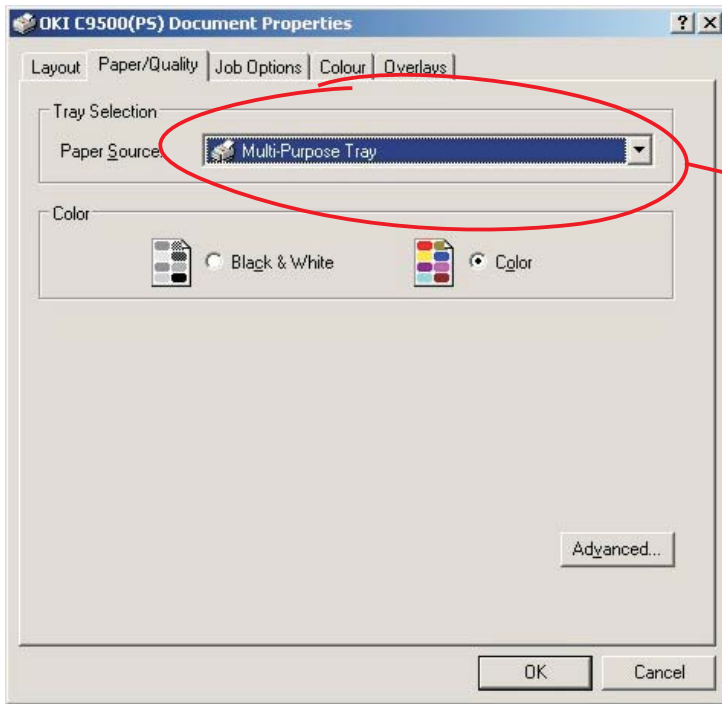


Turn on the Reposition images to Center of page option

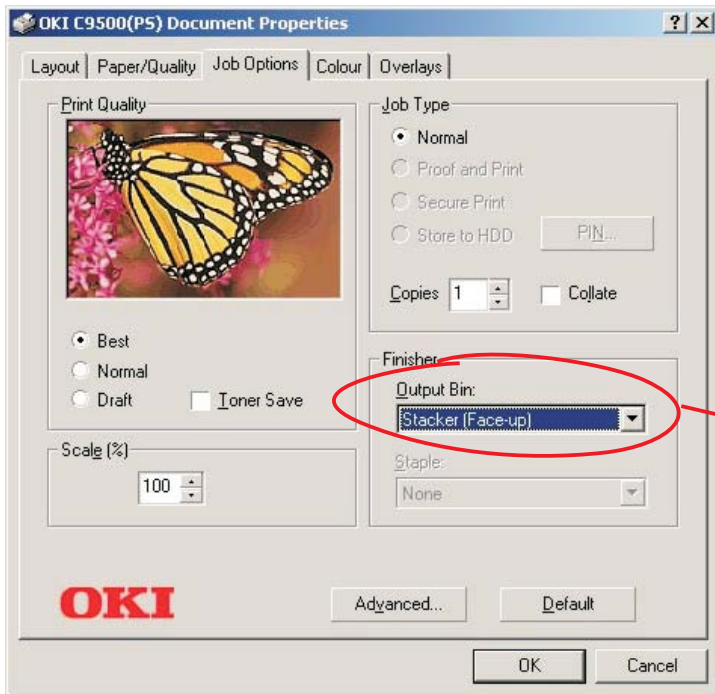


Turn off Download fonts

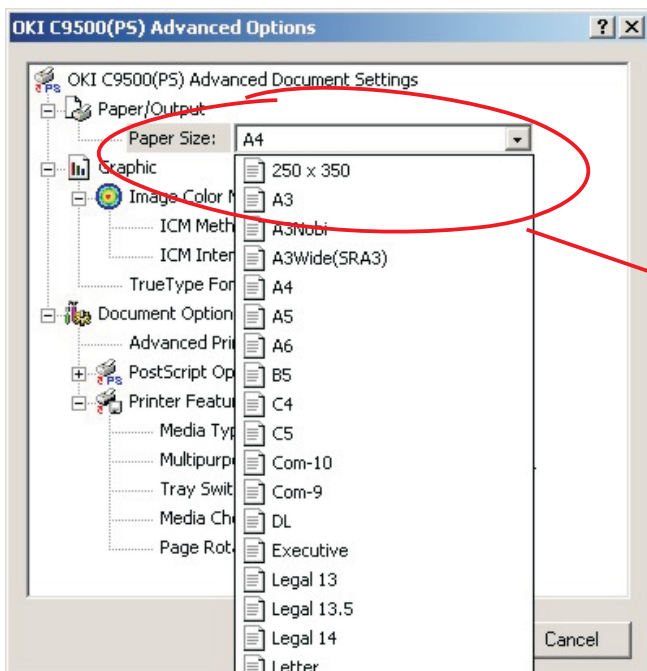
Screen frequency max. 200 lpi (default may remain)



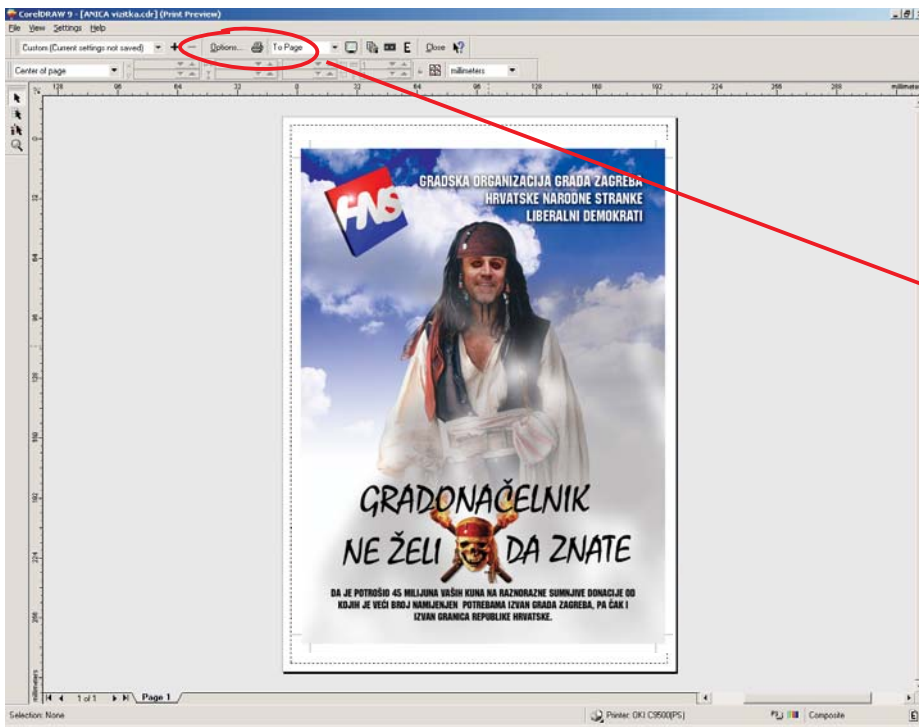
In option "General " go to printer "properties". Turn on Multi Purpose Tray on Paper/Quality



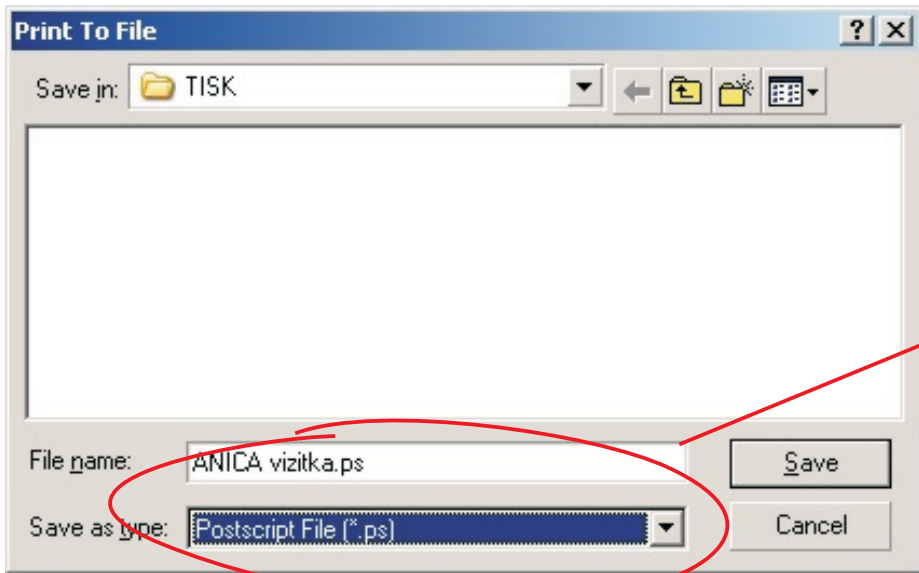
In Job Options select Stacker (Face-up) on Output Bin



In Advanced options select the Paper Size (up to 440 x 312 mm)



Look at preview and if all is O.K., click the "printer" icon



Select ps mode and then click Save